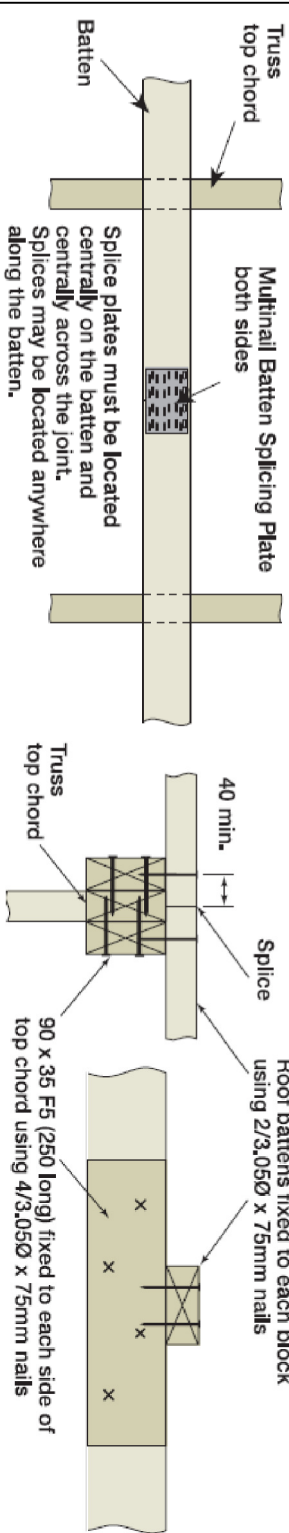


N1 - IRON ROOF 2 - STOREY

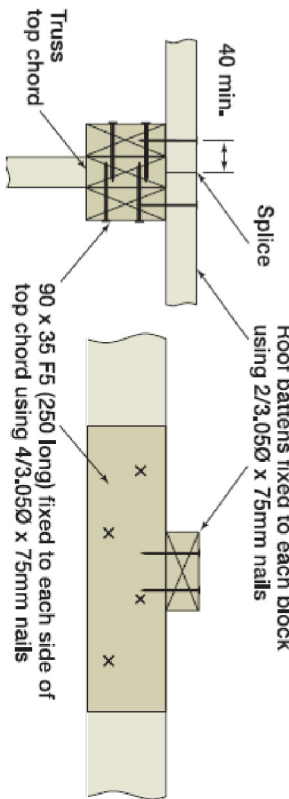
| | | TRUSS CONNECTIONS | |
|---|---|--|---|
| JOINT GROUP JD4 | | JOINT TYPE | FIXING DETAILS |
| JOINT | *TIEDOWNS TO LINE UP VERTICALLY* NOMINAL FIXINGS | DETAIL A1 HIP RAFTER TO TRUNCATED TRUSS | TOP CHORD - ONE FRAMING ANCHOR BENT TO SUIT, WITH 4/30mm x 2.8mm REINFORCED-HEAD NAILS INTO THE SIDE OF EACH TOP CHORD FOR TRUNCATED GIRDER |
| WALL FRAMING | | DETAIL B1 JACK RAFTER TO TRUNCATED TRUSS | TOP CHORD - ONE FRAMING ANCHOR BENT TO SUIT, WITH 4/30mm x 2.8mm REINFORCED-HEAD NAILS INTO THE SIDE OF EACH TOP CHORD FOR TRUNCATED GIRDER |
| TOP & BOTTOM PLATES TO STUDS | 2/75 x 3.05mm NAILS | | |
| NOGGIN'S | 2/75 x 3.05mm NAILS SKEWED OR THROUGH NAILED 1/ 75mm MASONARY NAIL @ 1200mm CTS MAX. | DETAIL C1 EXTENDED JACK RAFTER TO TOP CHORD OF TRUNCATED STANDARD TRUSSES | 2/75mm x 3.05 SKEW NAILS INTO THE SIDE OF EACH TOP CHORD |
| BOTTOM PLATE TO CONCRETE SLAB | | | |
| NAIL LAMINATED STUDS | 2/75 x 3.05mm NAILS @ 600mm CTS | | |
| SIDES OF OPENINGS TO PLATE | 2 / 75 x 3.05mm NAILS TO 35mm PLATE | DETAIL D1 CREEPER OR JACK RAFTER TO HIP RAFTER (MAX STATION 1800mm) | TOP CHORD - 3/75mm x 3.05 NAILS THROUGH JACK RAFTER TOP CHORD INTO HIP RAFTER TOP CHORD |
| | | DETAIL E1 CREEPER OR JACK RAFTER TO HIP RAFTER (MAX STATION 3000mm) | TOP CHORD - FIX AS D1 PLUS ONE MITRE PLATE WITH 6 /30mm x 2.80 REINFORCED-HEAD NAILS TO EACH END OF TOP CHORD |
| FIXING TO SLAB/FLOOR @ EACH END OF STRUCTURAL BRACE | N / A | DETAIL F1 HANGING BEAM FIXING | FIX HANGING BEAM TO CEILING JOIST WITH BLOCK OR JOIST TIE WITH MIN 2 /2.8 NAILS HANGING BEAM TIED DOWN ON EACH END AS PER TIEDOWN REPORT |
| ROOF FRAMING | | DETAIL G1 CEILING TRIMMER FIXING | FIX CEILING TRIMMER TO RAFTER AND CEILING JOIST WITH 2 /3.05 NAILS RAFTER TIED DOWN AS PER TIE DOWN REPORT |
| RAFTER / TRUSS TO FRAME | 2/75mm SKEW NAILS | | |
| RAFTER / TRUSS INTERNAL SUPPORT TO FRAME | 2/75mm SKEW NAILS | | |
| CEILING JOISTS TO TOP PLATE | 2/75mm SKEW NAILS | | |
| CEILING JOISTS TO RAFTERS | 2/75mm MACHINE DRIVEN NAILS | | |
| COLLAR TIES TO RAFTERS | 3/75mm MACHINE DRIVEN NAILS < 4.2 | | |
| RAFTER TO RAFTER @ RIDGE | 75x88 TIE WITH 3/75x3.05 NAILS EACH END AND TO EVERY COMMON RAFTER | | |
| RAFTER TO UNDERPURLIN | 2/75mm SKEW NAILS | | |
| HIP RAFTER TO UNDERPURLIN | CLEAT PLATE TO UNDERPURLIN / HIP CONNECTION | | |
| VERANDAH BEAM TO POSTS | 2M10 BOLTS | | |
| ROOF BATTENS | 1 No 14 x 100mm TYPE 17 SCREW | | |
| | | | |
| | | | |
| | | | |
| FLOOR FRAMING | | | |
| BOTTOM PLATE TO FLOOR FRAME | 1/75x3.05mm MACHINE DRIVEN NAILS @ 1200 CTS MAX | | |
| UPPER FRAME TO LOWER FRAME | N/A | | |
| EACH END OF STRUCTURAL BRACE | N/A | | |

ROOF BATTEN SPLICING CRITERIA

OPTION 1

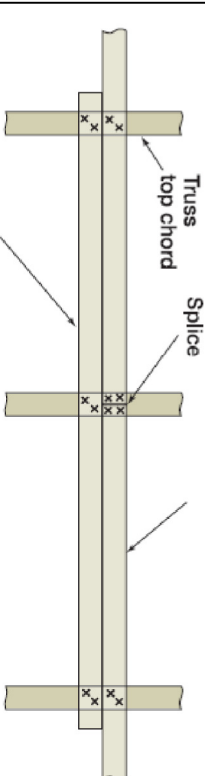


OPTION 2

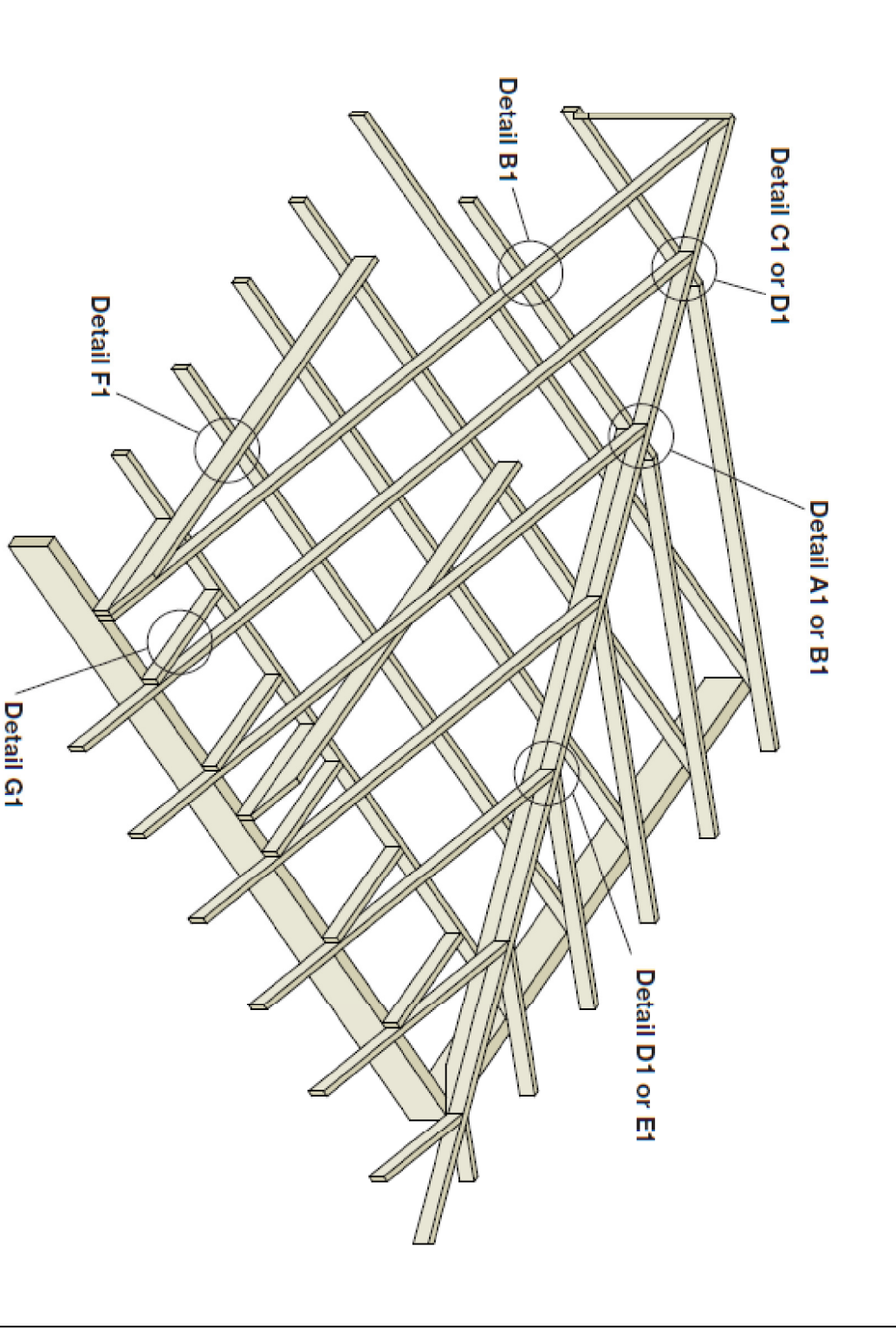
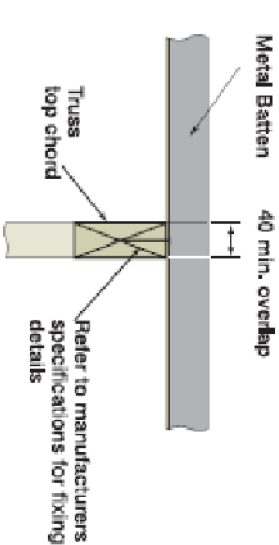


OPTION 3

Roof battens fixed to truss top chord using 2/3.050 x 75mm nails



OPTION 4



| | | | |
|------------|--|-----------------------------|----------|
| DWELLING 2 | | WP PROPERTY GROUP | |
| | | 541 ANZAC HWY, GLENELG EAST | |
| | | Page | 5/5 |
| | | Date: | 25/05/18 |
| | | Scale: | 1 : 100 |
| | | JOB No: | TT09728 |